



Modern Montessori School

COVID-19

Prevention & Control Plan

LETTER FROM THE CHAIRMAN



I would like to welcome you and our beloved students back to school for the 2020-2021 academic year.

As you all know, the world at large has been going through a global pandemic that has forced upon us extreme precautionary measures in the hopes of conquering it. Each country is still in the process of instilling new protocols on all sectors to protect its citizens and make it as safe as possible to return to work. We, on our end, have been working diligently to provide the safest possible environment for the return of our students.

You can rest assured that we have prepared and provided new protocols for our students. Details of all precautionary measures will be outlined hereunder. Do please take the time to read it with your children, carefully. We must work collectively and positively to ensure that all safety measures are abided by to avoid any future shutdown.

Stay safe and healthy.

Yours sincerely,

Randa Al-Hasan
Chairman

”

“Timely, evidence-based information is the best vaccine against rumors and misinformation”

—DR. JARBAS BARBOSA, PAHO’S ASSISTANT DIRECTOR

LETTER FROM THE CEO



Over the past several weeks, we have worked on refining our plans for a safe and organized reopening this September. During those weeks many possible routes to opening the school were discussed, and each scenario was carefully evaluated in light of the recent changes made to national and international guidelines for school reopening. Eventually we were able to meet our main aim, being the return of our students to an in-person educational experience that they are accustomed to. Therefore, we are delighted to inform you that our school day will begin at 7.50 a.m. and end at 1:30 p.m. for our KG and Primary students and at 2:55 p.m. for our Middle and Senior students, except for Tuesdays where KG students leave at 12:00 p.m. and Grades 1-12 students leave at 1:30 p.m. In addition, to ensure that our students are being exposed to the complete array of subjects and learning experiences we have decided to offer both core and non-core subject classes.

We are pleased to share our newly formulated health and safety manual which includes a variety of modifications to our normal routines, all of which are designed to assist in safeguarding our school community's health and wellbeing. Thus, we hope that through acting together and following these guidelines we will be able to provide our students with the safest environment and the highest learning experience.

Best regards,

Moh'd Yousef
CEO

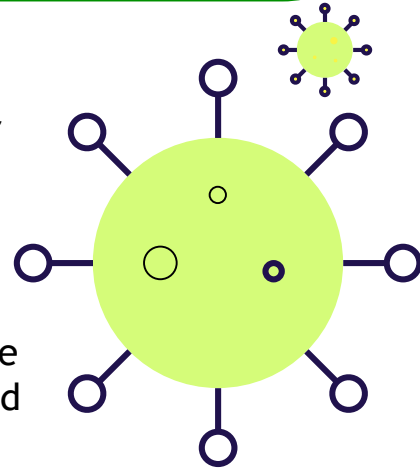
STRONGER TOGETHER!



The return to full-time, face-to-face teaching and learning is equally as exciting for teachers as it is for students. Being back at school for our K-12 students means the return of social interaction essential for their emotional wellbeing.

Although some might have hoped for better circumstances, we see this new experience as a window of learning opportunities. With that said, we are fully aware of some of the concerns you may have during the COVID-19 schooling experience and for that reason, we will be providing you with all that has been and will be implemented for the safe return of our dear students.

It is imperative for you to know that all policies and procedures have been implemented in absolute coordination with the Ministry of Health, Ministry of Education and the Department of Education in Amman.





PREVENTION



PREVENTION AND CONTROL PLANNING



Staged reopening of school

GRADE 12: Sunday, August 9th

GRADE 11: Tuesday, August 11th

ONLY Grades 1, 3, 5, 7, 9: Tuesday, September 1st

ONLY Grades 2, 4, 6, 8, 10: Wednesday, September 2nd

On Thursday, September 3rd , all students come to school together.



Distribution of protective equipment to students (MMS face shield, AHA mask) as well as the provision of hand sanitizers across the school



The implementation of physical and social distancing measures



Visual screening and temperature checks

PREVENTION AND CONTROL PLANNING



Students are requested to come fully equipped with the needed school supplies at all times



Increased provision of social and emotional support



Increased frequency of cleaning and disinfection of the school



Students are encouraged to bring in a healthy packed lunch. However, the School Cafeteria will be offering meal options. Those who are interested in purchasing meals must acquire coupons from the Finance Department in advance as the exchange of cash money will not be permitted. Meals will be delivered to the students in their classrooms.

KG PREVENTION AND CONTROL PLANNING



Staged reopening of school
KG2: Tuesday, September 1st
KG1: Wednesday, September 2nd



MMSKG staff will be wearing protective equipment at all times. However, students will not be obliged to wear any.



When entering the KG, students will be asked to change their shoes to plimsolls (sand shoes) which must be provided by the parents.



Visual screening and temperature checks



The implementation of physical and social distancing measures



Increased frequency of cleaning and disinfection of the school

KG PREVENTION AND CONTROL PLANNING



Students will be provided with the needed school supplies



Meals should be packed in lunchboxes. Please refrain from using plastic bags and from bringing in school bags.



Through practical life activities, children will be trained to sanitize their didactic materials before the end of their work cycle and before returning it to the shelf ready to be used again.

NEEDED SCHOOL SUPPLIES



All stationery
needed for classes

01



A small hand sanitizer and
a small pack of wet wipes
for frequent disinfection of
surfaces used



02

03



A water bottle



ATTENDANCE



ATTENDANCE POLICY



01

Students with a fever of 37.5 °C or above must not come to school.

02

Students who show flu-like symptoms, but do not have a fever, must not come to school.

03

Students will be monitored throughout the school day. If a student appears to be unwell, he/she will be sent to the school clinic and may be advised to go home and seek medical attention. The student will then be asked to wait in a separate room until parent/guardian arrives.

04

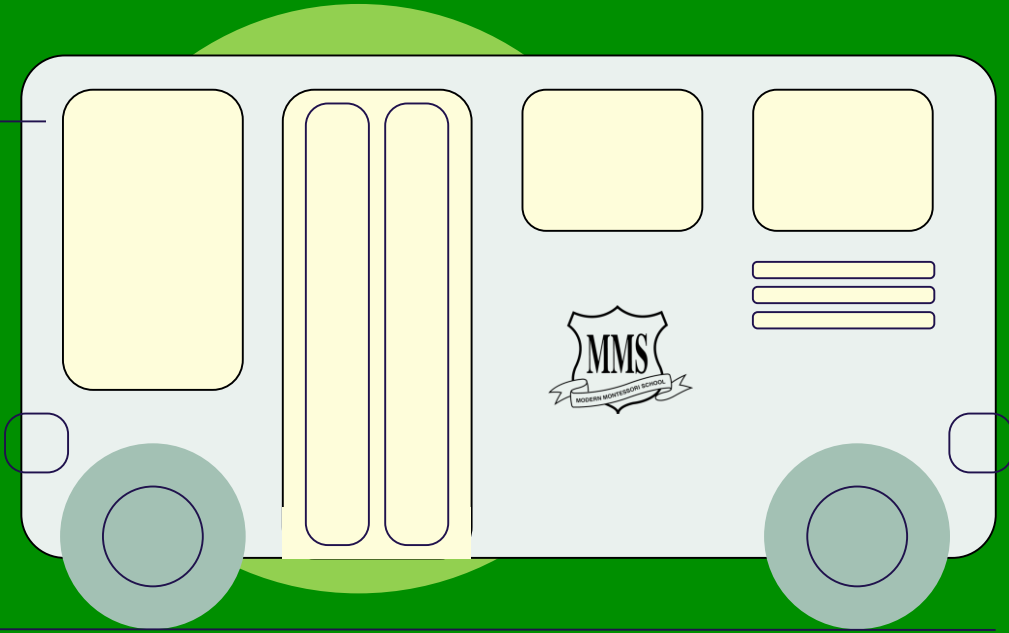
After a medical absence, students can only return to school with a medical report.

05

In the event a student has been in close contact to a person that has been tested positive for COVID-19, he/she must remain at home, and inform the school secretary and wait for further instructions.

06

Remote learning will be offered to students who miss school for medical reasons.



TRANSPORTATION



TRANSPORTATION POLICY



Buses will be sanitized before and after school



Face shields/masks must be worn while on the school bus at all times



Before entering the school bus, temperatures will be checked. Students who have a fever will be asked to stay home.



Social distancing protocols will be carried out, as per the rules and regulations of the Ministry of Transportation



Windows will be kept open to allow for natural ventilation



COMMUNICATION

www.mms.edu.jo



COMMUNICATION

www.mms.edu.jo



To abide by the Government's rules and regulations, parents are not advised to visit the school unannounced unless for emergency reasons. However, if a parent wishes to meet with a school representative, please make sure to schedule an appointment by contacting the relevant school number below.



Our collective collaboration is key to our students' success and wellbeing.

KG

Ms. Shireen Kurdi

07 951 234 18

kgsec@montessori.edu.jo

Primary School

Ms. Sajidah Shamayleh

07 974 774 54

Sajidah.ALShamaileh@montessori.edu.jo

Middle School

Ms. Mais Hallaq

07 968 999 65

middleschool@montessori.edu.jo

Senior School

Ms. Rajaa Mufleh

07 951 573 89

rajaa@montessori.edu.jo

Administration

Ms. Lana Rabadi

07 955 475 41

info@montessori.edu.jo

THANK YOU



Do you have any questions?

info@montessori.edu.jo
+962-6-553-5190
www.mms.edu.jo

